



Instruments in C (Bass Clef)

Cello, Bassoon & Trombone

in each carol,
join in
after the
introduction—at
the same time
as the singers!!

1

O COME ALL YE FAITHFUL 3 vv.



(notes in brackets verse 1 only)



2

ONCE IN ROYAL - 3 verses



3

O LITTLE TOWN - 3 vv. — vv. means verses!!



THE FIRST NOWELL - 3 vv.

Carols with a STAR mean you have the tune!



are you
playing a wind
instrument??

Repeat this section
CHORUS



Take your
breaths at
the same
time as the
singers do



4



WHILE SHEPHERDS - 6 vv. make sure you keep count!!!

5

5

beware—the 3 verses have very slightly different music!

IN THE BLEAK MIDWINTER verse 1

9

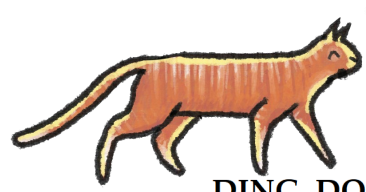
17 verse 2

25

33 verse 3

41

6



wind players—lots of puff needed for this one!!!

DING, DONG, MERRILY ON HIGH (3 verses)

7

7

12

GOOD KING WENCESLAS - 4 verses

7

11 DS - 4 verses

8





AWAY IN A MANGER - 3vv.

9

9

7

12



GOD REST YOU MERRY, GENTLEMEN - 3 vv.

1. | 2.

7

12

10

SILENT NIGHT - 3 verses

E flats!!

10

17

12

11



practise with care—or you may get lost!!!

TWELVE DAYS OF CHRISTMAS First (Day)

5 Second

10 Third

16 Fourth

23 Fifth

FIVE GOLD RINGS!

29

after verse 6, use this bar as many times as required

34

39 last time, slowing to End...

See that unusual sign at the very end? DS means go back to the similar sign (two lines above) as many times as you need!!

13

HARK! THE HERALD 3 verses



how are you doing?? nearly finished!!!



JINGLE BELLS

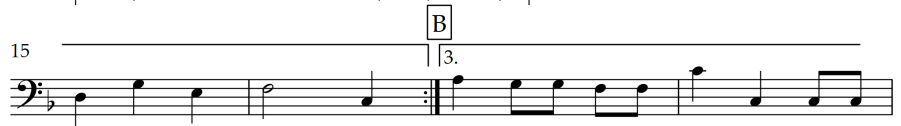
play straight through



14

15

WE WISH YOU A MERRY CHRISTMAS 3vv + intro



Happy Christmas! We hope you enjoyed playing along!!!